

**New 800 Student Elementary School** | ***Schematic Design*** June 2017  
Santa Fe Independent School District



## Table of Contents

Santa Fe ISD Board of Trustees	Page 3
Santa Fe ISD Administrators	Page 3
Design Charette	Pages 4-5
Design Inspirations	Pages 6-7
Site Plan	Pages 8-9
Floor Plans	Pages 10-11
Views	Pages 12-19
Project Schedule	Page 20

### Board of Trustees

J. R. “Rusty” Norman	President
John Rothermel	Vice President
Sheryl Skufca	Secretary
John H.Snider	Trustee
Patrick Kelly	Trustee
Eric E. Davenport	Trustee
Wayne Logan	Trustee

### Administrative Staff

Dr. Leigh Wall	Superintendent
Lee Townsend	Chief Financial Officer
Patti Hanssard	Assistant Superintendent for Human Resources
Dr. Jackie Shuman	Assistant Superintendent of Curriculum & Instruction
Walter Braun	Chief of Police
Rick Morrill	Director of Technology
Mark Kanipes	Director of Athletics
Cherie’ Bowers	Director of Child Nutrition
Kathy Oliver	Director of Instructional Support
Bob Atkins	Director of Maintenance & Project Manager
David McMillian	Director of Transportation

**S**anta Fe ISD's beloved Indians brand represents more than just a mascot. Native American tribes have influenced this area of the Gulf Coast in many ways over time.

Early settlers of this region were likely Karankawan. While other tribes, such as the Atakapa, also may have influenced the area.

Within the Karankawan culture, the Coco tribe claimed areas in the vicinity of modern-day Santa Fe. Of the Atakapa, the Akokisa Tribe also claimed areas just to the East. While their languages differed, the Coco and Akokisa tribes lived similar lives that were driven by the climate and land of the Texas Gulf Coast.

These natives were hunter-gatherers. They came together as large communities during the winter on the Coast, either in the bays or on the islands. Here, tides were low and schools of fish were easily accessible. Also, there were plenty of oyster and crab to sustain them. Dug-out canoes allowed travel throughout the waterways. In these cooler months, families lived in thatched huts called Ba-ak and slept on shell beds covered in palm leaves or hides.

In the Summer, fish were harder to catch and it was too warm for crab and oysters. Tribes moved inland in smaller groups, or Bands, to hunt for deer, bison, antelope, bear and wild hogs. These nomads were skillful at hunting with longbows. They also collected berries and nuts. They moved around, not staying in one place more than a couple of weeks. Their shelters were more temporary structures. Often, they would construct simple Wickiups or raised Chickees to sleep in. They used Lean-to structures as areas to work, whether creating clothing and making tools or preparing food and providing child care.

When other resources were needed, these tribes often traded with the Tonkawas to the North, the other Atakapa tribes to the East or the Coahuiltecan Tribes to the West. Early European explorers encountered natives of this region and were impressed by their social structure. Children were shown great affection and reverence within their cultures. This is a quality that has not left the culture of the Santa Fe community.

## Why use the Native American influence in designing the new SFISD Elementary School?

*School Pride and Community History!*



### Inspiration: Structure of the School

We can make comparisons of Tribal cultural structure and Academic Campus structure.

Student	->	Member
Classroom	->	Family
Grade Level	->	Band
Campus	->	Tribal Village

### Inspiration: The Library

Kivas have been used by many Native American cultures as place to gather their tribes for ceremonies. Kivas are used in education today to gather students outside of the classroom, often in conjunction with the library. These spaces are typically simple and make allowances for different sized groups to gather.

The concept of a central Teepee (tepee, tipi) Kiva stems from its traditional circular structure. Historically, the Teepee represents the Plains Indians nomadic lifestyle. While the Coast hugging natives of Southeast Texas probably did not commonly use a Teepee in their travels during the summer months, their neighbors to the North did. The Tonkawas were known to be friendly to the Karankawa tribes. Beyond trading each other goods, they were known to share shelters when necessary.

### Inspiration: External Appearance

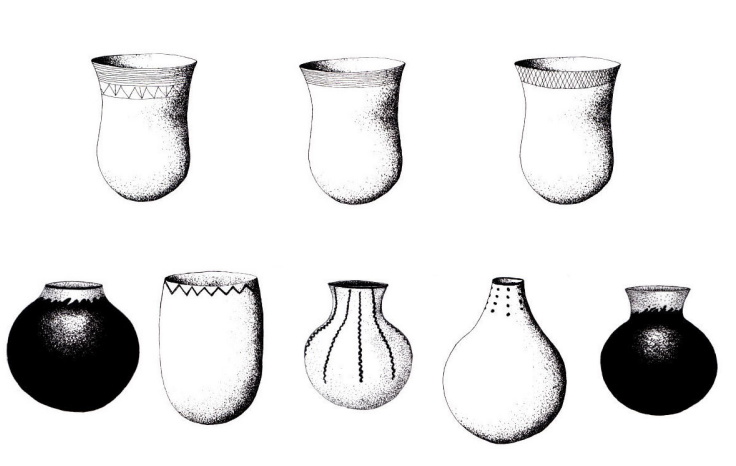
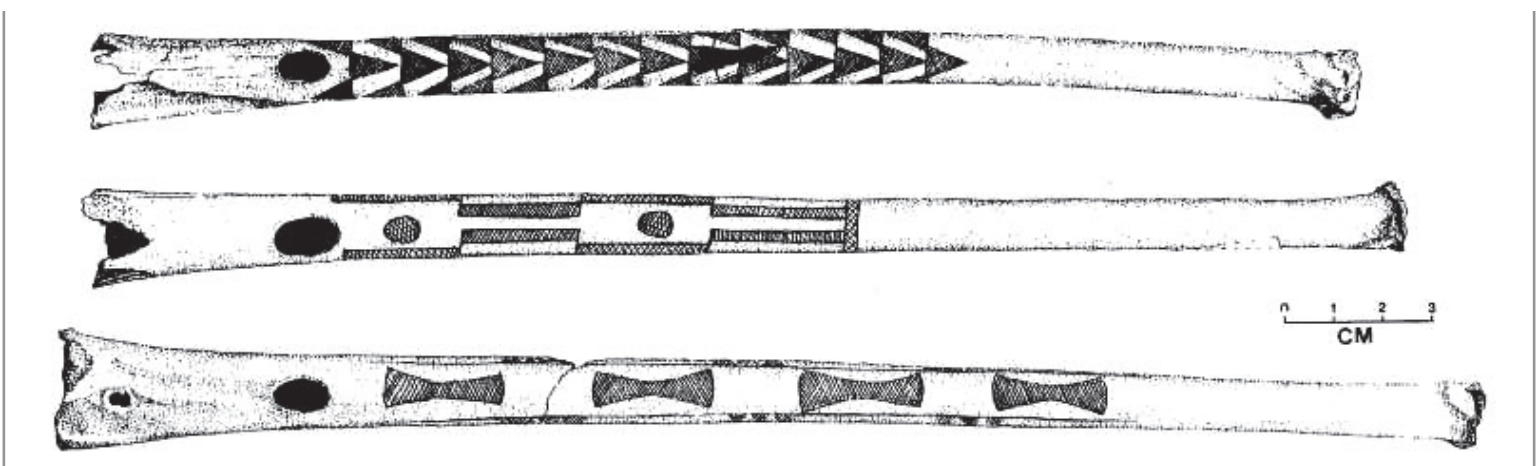
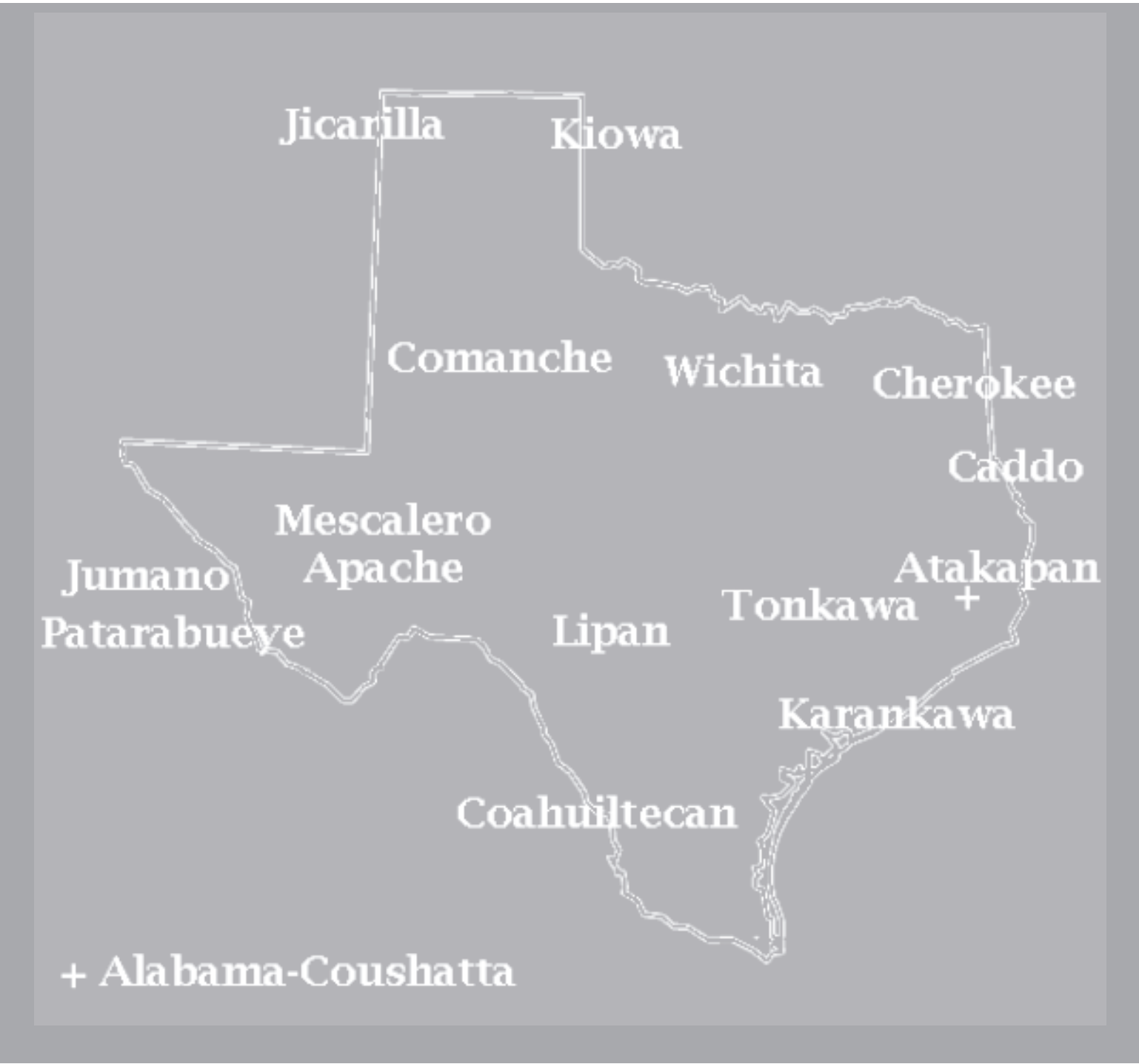
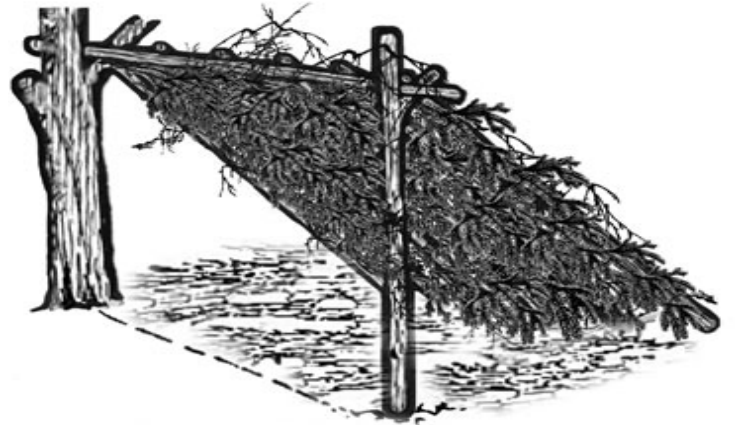
The Coco and Akokisa tribes used a Lean-to structure as a place for "work". Exterior and Interior design elements of the overall building appearance are a visual representation of the traditional Lean-to structure. Thereby reinforcing the concept of "School" as a place for "work".

### Inspiration: Areas Within the Building

Understanding these structures these cultures built, were are able to further derivate as we organize spaces.

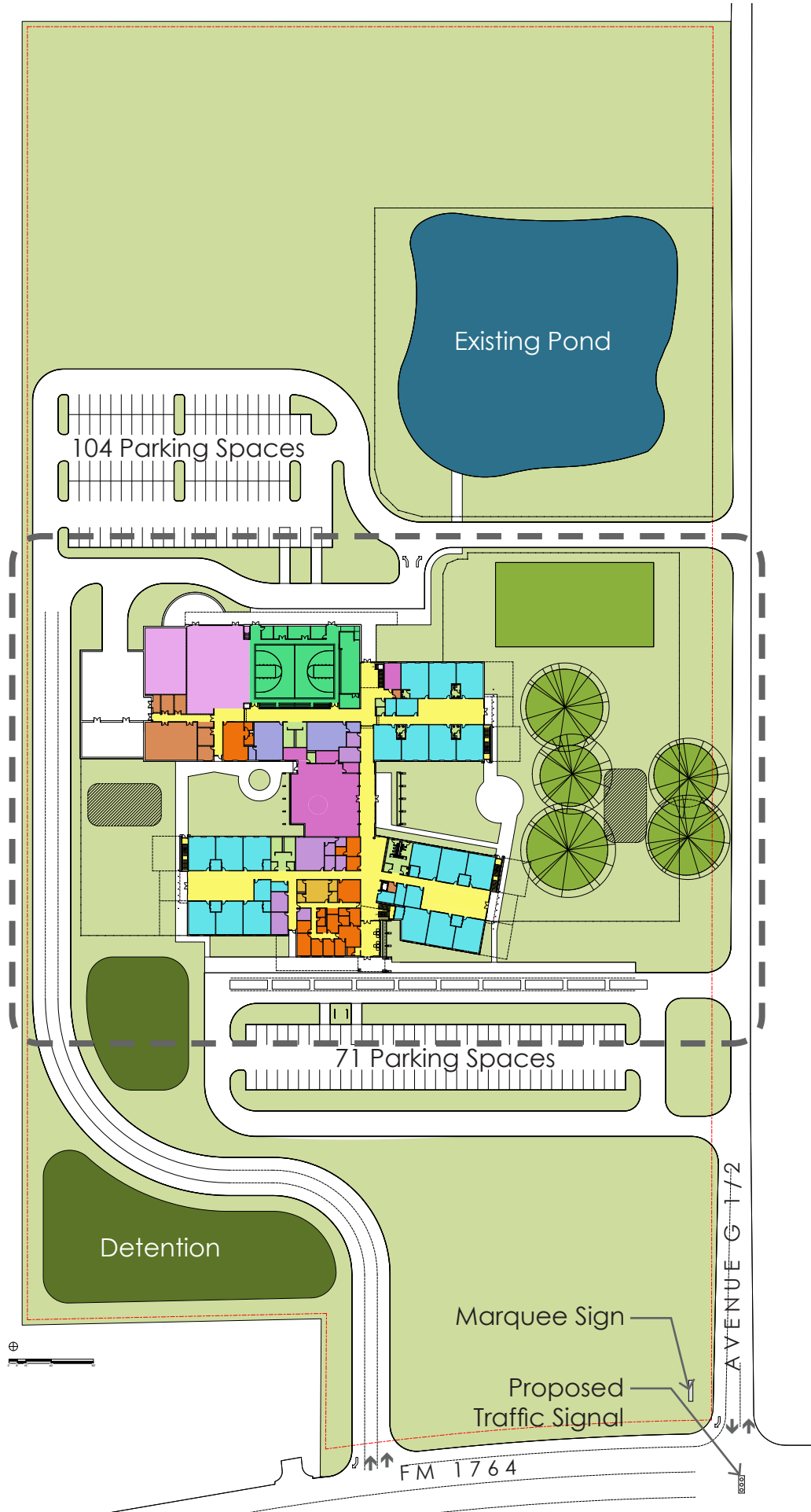
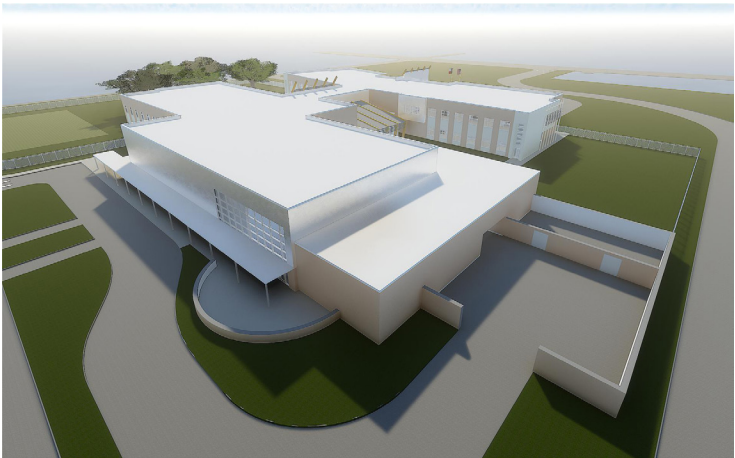
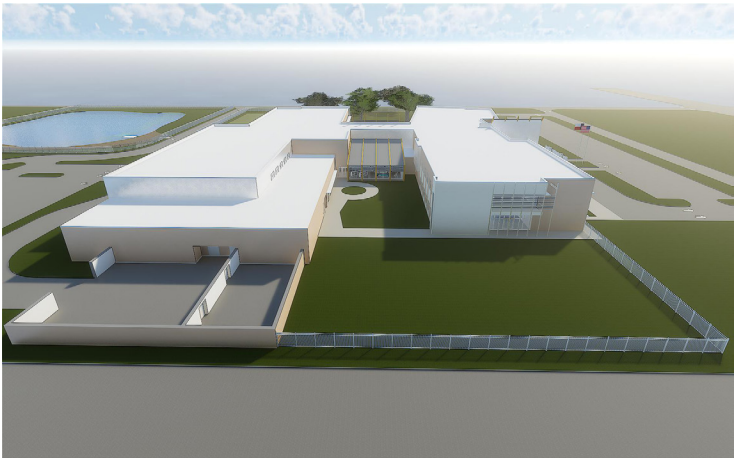
Classroom	->	Ba-ak/Wickiup
A place for Family Members to gather.		
Pod	->	Camp
A place for Families to gather as a Band.		
Dining/Gym	->	Council Lodge
A place for Bands to gather as a Tribe.		
Administration	->	Chief's Circle
A place for leaders to collaborate.		







site plans  
& photos





enlarged site plan







# building floor plans



level 2





aerial view at entry





entry view

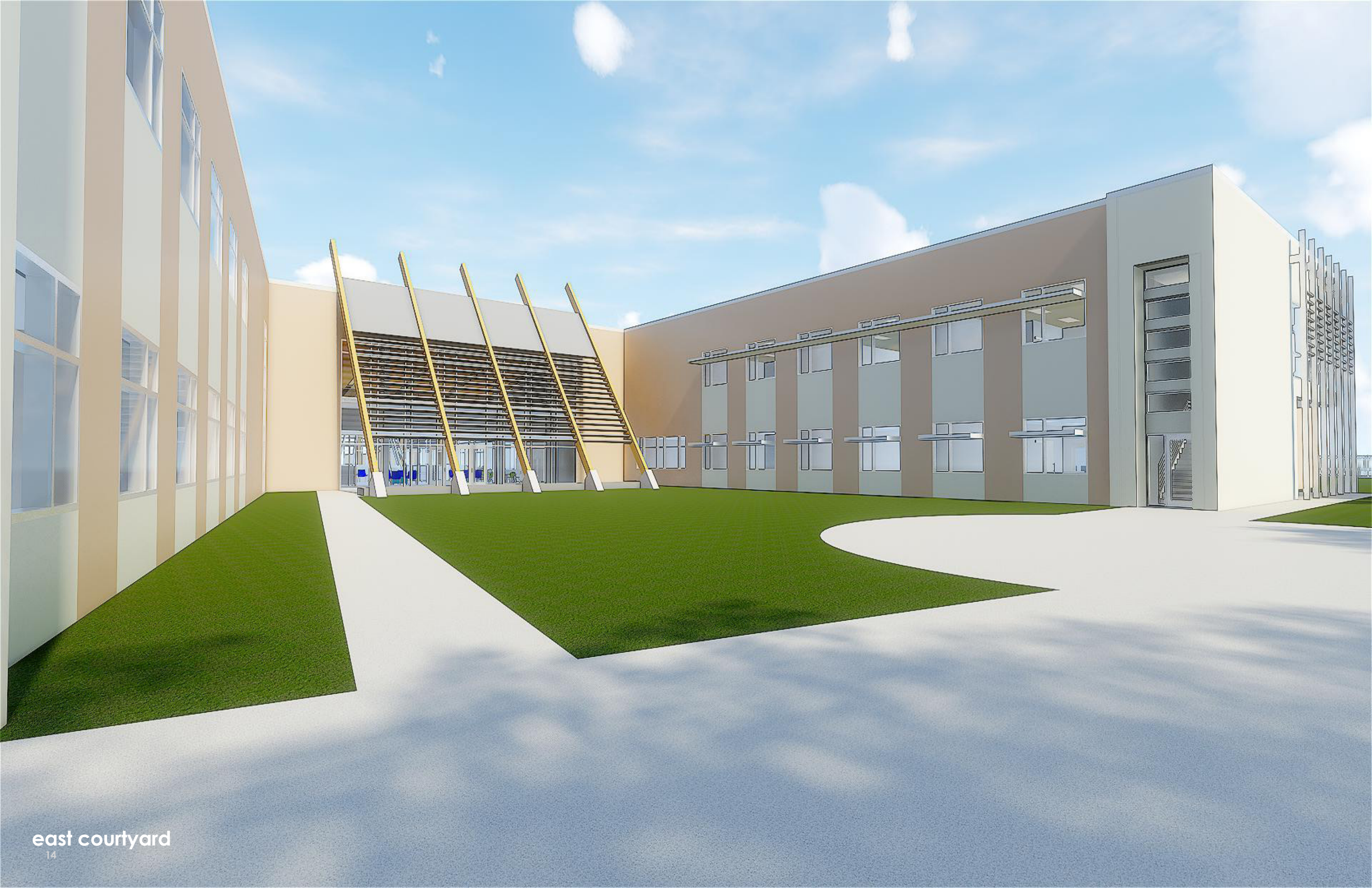


lobby view



east courtyard view





east courtyard

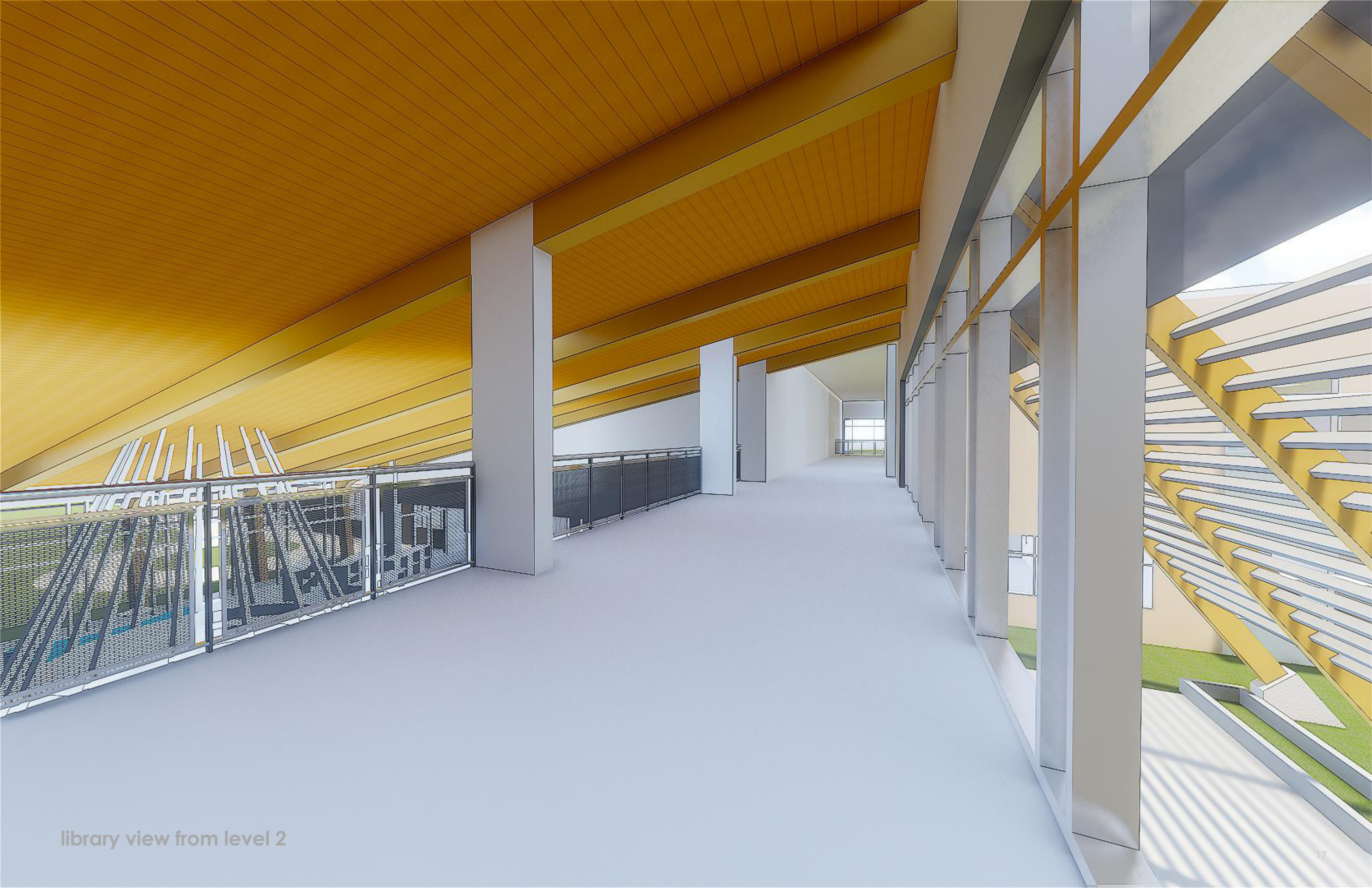












library view from level 2





5th grade collaboration area





1st grade collaboration area

# Project Schedule - New Elementary School - Santa Fe ISD

Phase	Date	
<b>Schematic Design</b>	April 3, 2017	thru June 19, 2017
Program Charrette Sessions	April 3, 2017	thru April 7, 2017
Program Development	April 3, 2017	thru April 7, 2017
Program Submission & District Review	April 10, 2017	thru April 14, 2017
Schematic Design Charrette	May 15, 2017	thru May 18, 2017
Schematic Design Refinement	May 22, 2017	thru June 8, 2017
SD Submission	June 9, 2017	
Board Presentation - SD	June 19, 2017	
<b>Design Development</b>	June 19, 2017	thru August 22, 2017
DD Review Sessions with SFISD	July 17, 2017	thru July 20, 2017
Assembly of DD Presentation	August 7, 2017	thru August 11, 2017
DD Submission	August 11, 2017	
DD - District Review	August 14, 2017	thru August 18, 2017
Board Presentation - DD	August 28, 2017	
<b>Construction Documents</b>	August 21, 2017	thru December 4, 2017
Construction Documents	October 18, 2017	
50% CD Review with SFISD	November 20, 2017	
95% CD Review with SFISD	November 21, 2017	thru December 4, 2017
Final Review & Coordination	December 18, 2017	
SFISD Approval to Release CDs		
<b>Bidding/Proposals</b>	December 17, 2017	
First Advertisement	December 19, 2017	
Bid Documents Released to Proposers	December 24, 2017	
Second Advertisement	January 3, 2017	
Pre-Proposal Conference	January 16, 2017	
Receive Proposals	January 30, 2018	
Present Proposals to Board of Trustees	February 5, 2018	
CSP Approval by Board of Trustees		
<b>Construction</b>	February 19, 2018	thru May 30, 2019
Notice to Proceed	February 20, 2018	
Construction	April 20, 2019	
Substantial Completion	May 31, 2019	
Final Completion	June 1, 2019	
SFISD Move-in / Occupancy		

Mar-17						
S	M	T	W	T	F	S
			1	2	3	4
5	6	7	8	9	10	11
12	13	14	15	16	17	18
19	20	21	22	23	24	25
26	27	28	29	30	31	
Jun-17						
				1	2	3
4	5	6	7	8	9	10
11	12	13	14	15	16	17
18	19	20	21	22	23	24
25	26	27	28	29	30	
Sep-17						
					1	2
3	4	5	6	7	8	9
10	11	12	13	14	15	16
17	18	19	20	21	22	23
24	25	26	27	28	29	30
Dec-17						
					1	2
3	4	5	6	7	8	9
10	11	12	13	14	15	16
17	18	19	20	21	22	23
24	25	26	27	28	29	30
31						
Mar-19						
				1	2	3
4	5	6	7	8	9	10
11	12	13	14	15	16	17
18	19	20	21	22	23	24
25	26	27	28	29	30	31

Apr-17						
S	M	T	W	T	F	S
						1
	3	4	5	6	7	8
9	10	11	12	13	14	15
16	17	18	19	20	21	22
23	24	25	26	27	28	29
30						
Jul-17						
						1
2	3	4	5	6	7	8
9	10	11	12	13	14	15
16	17	18	19	20	21	22
23	24	25	26	27	28	29
30	31					
Oct-17						
1	2	3	4	5	6	7
8	9	10	11	12	13	14
15	16	17	18	19	20	21
22	23	24	25	26	27	28
29	30	31				
Jan-18						
	1	2	3	4	5	6
7	8	9	10	11	12	13
14	15	16	17	18	19	20
21	22	23	24	25	26	27
28	29	30	31			
Apr-19						
1	2	3	4	5	6	7
8	9	10	11	12	13	14
15	16	17	18	19	20	21
22	23	24	25	26	27	28
29	30					

May-17						
S	M	T	W	T	F	S
	1	2	3	4	5	6
7	8	9	10	11	12	13
14	15	16	17	18	19	20
21	22	23	24	25	26	27
28	29	30	31			
Aug-17						
		1	2	3	4	5
6	7	8	9	10	11	12
13	14	15	16	17	18	19
20	21	22	23	24	25	26
27	28	29	30	31		
Nov-17						
			1	2	3	4
5	6	7	8	9	10	11
12	13	14	15	16	17	18
19	20	21	22	23	24	25
26	27	28	29	30		
Feb-18						
				1	2	3
4	5	6	7	8	9	10
11	12	13	14	15	16	17
18	19	20	21	22	23	24
25	26	27	28			
May-19						
		1	2	3	4	5
6	7	8	9	10	11	12
13	14	15	16	17	18	19
20	21	22	23	24	25	26
27	28	29	30	31		

Our next step:

# design development!

- layout of building structure
- routing of MEP systems
- identification of wall construction and materials
- finalize roof slopes and develop details
- space (room) layouts
- data and electrical locations
- reflected ceiling plans/lighting configurations
- exterior elevation drawings
- food service layout for kitchen
- detention calculations
- landscape plan
- furniture plans
- statement of probable cost

